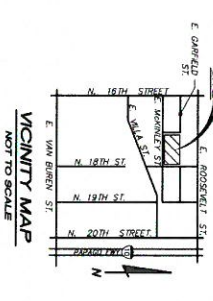


PARKING LOT RENOVATIONS

AT
EDISON ELEMENTARY SCHOOL

PHOENIX ELEMENTARY SCHOOL DISTRICT NO. 1
FOR
SITE ADDRESS: 804 N. 18TH STREET
PHOENIX, ARIZONA 85006
ADDRESS: 1817 NORTH SEVENTH STREET
PHOENIX, ARIZONA, 85006
PHONE: (602) 287-3755
CONTACT: ANTHONY PARRA



SITE INFORMATION:

APN: 116-16-069A

SHEET INDEX:

C1.1 GRADING AND DRAINAGE PLAN

ARCHITECT

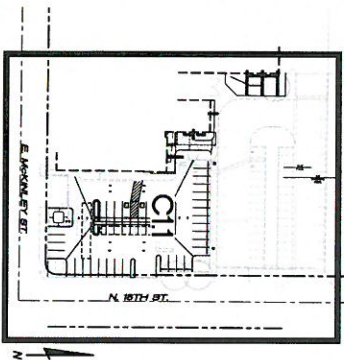
ADM GROUP, INC.
2100 WEST 15TH STREET
TEMPE, AZ 85281
PHONE: (480) 285-3802
CONTACT: BRIAN CRAWFORD

ENGINEER

HESS-ROUNTREE, INC.
9831 SOUTH 51ST STREET,
SUITE C-110
PHOENIX, ARIZONA 85044
PHONE: (480) 496-0244
FAX: (480) 496-0094
CONTACT: DOUG OSBORN, P.E.

OWNER

PHOENIX ELEMENTARY SCHOOL
DISTRICT NO. 1
1817 N. 7TH STREET
PHOENIX, ARIZONA 85006
PHONE: (602) 257-3755
CONTACT: ANTHONY PARASKEWAS



SHEET INDEX MAP

AS-BUILT CERTIFICATION

I HEREBY CERTIFY THAT THE "RECORD DRAWING" MEASUREMENTS AS SHOWN HEREON WERE MADE UNDER MY SUPERVISION OR NOTED AND ARE CORRECT TO THE BEST OF MY KNOWLEDGE AND BELIEF.

NOTE

THESE DRAWINGS ARE AN INSTRUMENT OF SERVICE ONLY AND ARE AND SHALL REMAIN THE EXCLUSIVE PROPERTY OF HESS-ROUNTREE, INC. NO REPRODUCTION OR OTHER USE

REGISTERED ENGINEER/LAND SURVEYOR

REGISTRATION NUMBER

DATE _____

**DESIGN CIVIL ENGINEER'S
NOTES TO CONTRACTOR**

1. NOTHING CONTAINED IN THE CONTRACT DOCUMENTS SHALL CREATE NOR SHALL BE CONSTRUED TO CREATE, ANY CONTRACTUAL RELATIONSHIP BETWEEN THE DESIGN CIVIL ENGINEER AND THE CONTRACTOR OR ANY SUBCONTRACTOR.

2. THE DESIGN CIVIL ENGINEER WILL NOT BE RESPONSIBLE FOR CONSTRUCTION MEANS, METHODS, TECHNIQUES, SEQUENCES OR PROCEDURES. THE CONTRACTOR SHALL BE SOLELY RESPONSIBLE FOR THE UTILIZATION OF THE DESIGN CIVIL ENGINEER'S DESIGN AND SHALL BE SOLELY RESPONSIBLE FOR THE PROTECTION OF THE DESIGN CIVIL ENGINEER'S DESIGN. THE CONTRACTOR'S RESPONSIBILITY, THE DESIGN CIVIL ENGINEER WILL NOT BE RESPONSIBLE FOR THE CONTRACTOR'S FAILURE TO CARRY OUT THE WORK IN ACCORDANCE WITH THE CONTRACT DOCUMENTS.
3. THE CONTRACTOR SHALL PROVIDE ADEQUATE MEANS OF CLEANING TRUCKS AND/OR OTHER EQUIPMENT OF AND PRIOR TO ENTERING PUBLIC STREETS, AND IT IS THE CONTRACTOR'S RESPONSIBILITY TO PROVIDE ADEQUATE MEANS OF CLEANING TRUCKS AND/OR OTHER EQUIPMENT. MEASURES ARE NECESSARY TO INSURE THAT ALL ROADWAYS AND ON SITE PARKING LOTS/PURE LOTS ARE MAINTAINED IN A CLEAN, MAID AND DUST-FREE CONDITION AT ALL TIMES.

4. IT SHALL BE THE CONTRACTOR'S RESPONSIBILITY TO CONTACT THE BLUE STAIN CENTER AND WORKING DATA PRIOR TO ANY EXCAVATION. THE UNDERGROUND UTILITY LOCATIONS AS SHOWN HEREON ARE BASED ON THE BEST INFORMATION AVAILABLE FROM UTILITY RECORDS AND OTHER DATA AS SUPPLIED TO THIS DESIGN CIVIL ENGINEER. THERE MAY BE OTHER UNDERGROUND UTILITY LINES, SERVICE LINES AND STRUCTURES PRESENT IN THE SUBJECT AREA. THE CONTRACTOR SHALL INCLUDE IN THE BID THE COST OF ANY SUCH UTILITY LOCATIONS AND PROTECT THEM FOR THE PURPOSE OF LOCATING ALL UNDERGROUND UTILITIES. THE CONTRACTOR WILL COORDINATE WITH THE OWNER AND ARCHITECT TO DETERMINE WHETHER SAID UTILITIES ARE TO BE ABANDONED OR PROTECTED FROM DAMAGE.

5. THE DESIGN CIVIL ENGINEER MAKES NO REPRESENTATION OR WARRANTY REGARDING THE EARTHWORK QUANTITIES OR THAT THE EARTHWORK FOR THIS PROJECT WILL BALANCE DUE TO THE VARYING FIELD CONDITIONS, CHANGING, SOIL TYPES, ALLOWABLE CONSTRUCTION TOLERANCES AND CONSTRUCTION METHODS PRIOR TO BIDDING THE WORK. THE CONTRACTOR SHALL THOROUGHLY SATISFY HIMSELF AS TO THE ACTUAL CONDITIONS, EARTHWORK QUANTITIES AND REQUIREMENTS OF THE WORK AND EXCESS OR DEFICIENCY THEREIN, ACTUAL OR RELATIVE.

6. THE CONTRACTOR SHALL ADJUST ALL EXISTING AND NEW CULVERTS, WATER VALVE BOXES, MANHOLES, GAS VALVE BOXES, PROTECTION BOXES, ETC. IN THE CONSTRUCTION AREA TO FINISH GRADE PER THE APPLICABLE, MAINTENANCE DETAIL. ALL VALVE BOXES SHALL BE INSTALLED WITH A MINIMUM OF 18" OF COVER, BE ISOLATED FROM THE CONCRETE PAVEMENT WITH EXPANSION JOINTS.
7. ALL NEW UNDERGROUND FACILITIES/UTILITIES SHALL BE INSTALLED AT THE PROPOSED FINISH GRADE. THE CONTRACTOR SHALL PROVIDE ALL INSULATED TRACERS WHEN SECURELY ATTACHED TO THE EXISTING UTILITY AT 8'-FEET ON CENTER. 12" OF TRENCH AND SHALL BE ACCESSIBLE ABOVE GRADE AT THE TERMINATION AND SHALL BE IDENTIFIED BY A SIGN AT THAT POINT. THE CONTRACTOR SHALL INCLUDE ALL COSTS ASSOCIATED WITH THIS REQUIREMENT IN THEIR BID.

8. THE CONTRACTOR SHALL MAKE NO CLAIMS AGAINST THE OWNER OR THE DESIGN CIVIL ENGINEER REGARDING ALLEGED INADEQUACY OF CONSTRUCTION STAKES SET BY THE DESIGN CIVIL ENGINEER UNLESS ALL SURVEY STAKES SET BY THE DESIGN CIVIL ENGINEER ARE MAINTAINED INTACT AND CANNOT BE VERIFIED AS TO THEIR ORIGIN. ANY REMEDIAL WORK REQUIRED TO CORRECT ANY ITEM OF IMPROPER CONSTRUCTION WORK IN THIS DEVELOPMENT SHALL BE PERFORMED AT THE SOLE EXPENSE OF THE RESPONSIBLE CONTRACTOR OR SUBCONTRACTOR.

9. ALL NEW PRIVATE UNDERGROUND UTILITIES (WATER LINES 3" AND LARGER, SEWER LINES, FIRE LINES AND STORM DRAIN LINES SHALL BE BEDDED WITH A.B.C., PER MAG SECTION 702, FROM 4" (MIN.) BELOW THE BOTTOM OF THE PIPE TO 12" (MIN.) ABOVE THE TOP OF THE PIPE.

BENCH MARK:

FOUND CITY OF PHOENIX BRASS CAP IN SOUTH HANDHOLE AT THE
INTERSECTION OF 16TH STREET AND VAN BUREN STREET IN THE
EAST BOUND TRAFFIC.
ELEVATION=1094.298 (CITY OF PHOENIX NGVD29 DATUM)



HESS - ROUNTREE, INC.
CONSULTING ENGINEERS & LAND SURVEYORS
9831 SOUTH 51ST STREET, SUITE C110
PHOENIX, ARIZONA 85044 (480)498-0244
H-R #1901-01

H-R #1901-01

COVER SHEET

100% CD SET



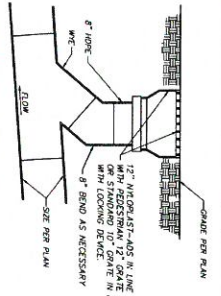
adm

2100 west 15th street
tempe, arizona 85281-6942
tel: 480.285.3800
fax: 480.285.3801

PHOENIX ELEMENTARY
SCHOOL DISTRICT NO. 1
804 N. 18TH STREET
PHOENIX, ARIZONA 85006
EDISON ELEMENTARY
ENTRY FACE LIFT AND LOBBY

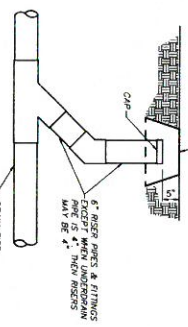
Project Number	5369-111
Date	3.4.2019
Drawn By	VR
Checked By	

1 OF 2
C0.1



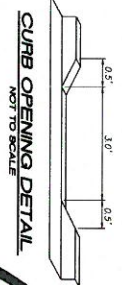
AREA DRAIN

NOT TO SCALE



STORM DRAIN CLEANOUT

NOT TO SCALE



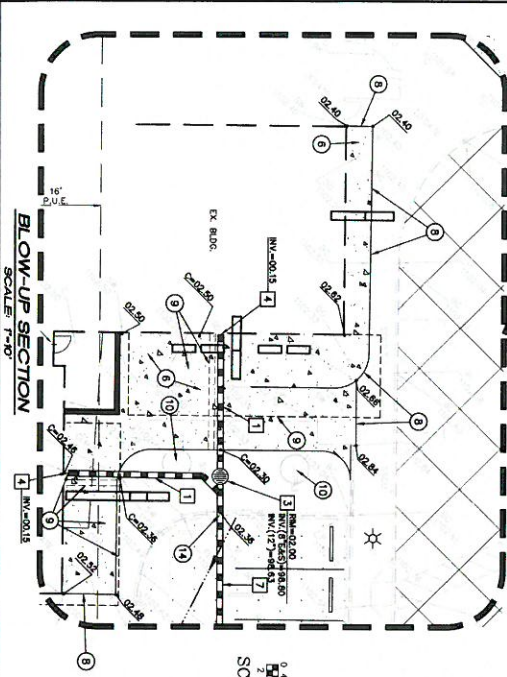
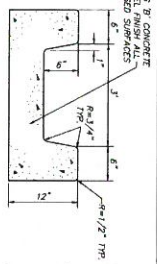
CURB OPENING DETAIL

NOT TO SCALE

NOTE:
SEE ARCHITECTURAL PLANS FOR DEMOLITION NOTES.

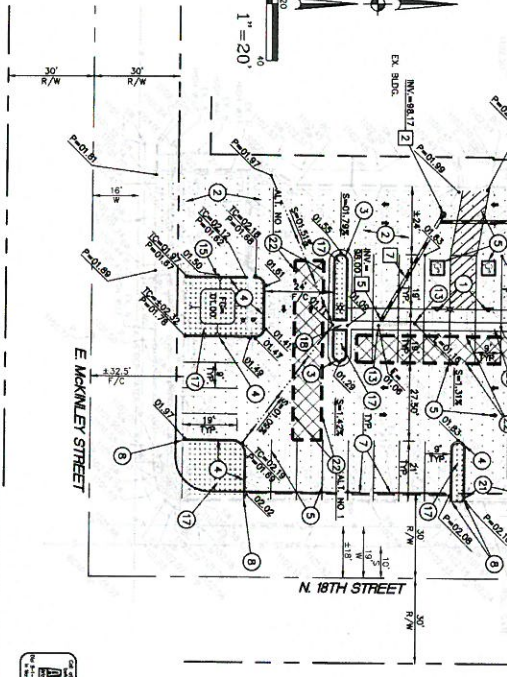
DRAIN THROUGH LANDSCAPED AREAS

NOT TO SCALE



BLOW-UP SECTION

SCALE: 1"=20'



1. INSTALL HANDICAP PARKING SIGN PER CITY OF PHOENIX REQUIREMENTS. POST AND BASE PER MAG STANDARD DETAIL NO. 151, TYPE B.
2. REMOVE EXISTING A.C. PAVEMENT AND A.B.C. REGRADE AS SHOWN. EXISTING FINISH GRADE ELEVATIONS AND PAVEMENT THICKNESS SHALL BE 3/4" (MIN) OVER 6" A.B.C. OVER COMPACTED SUBGRADE.
3. CONSTRUCT CONCRETE VERTICAL CURB AND GUTTER (MAG STANDARD DETAIL NO. 228-1, TYPE A).
4. INSTALL CONCRETE SINGLE CURB (MAG STANDARD DETAIL NO. 222, TYPE A).
5. PAINT STRIP PARKING LOT TO THE ALIGNMENT INDICATED, INCLUDING THE PAINTING OF ALL HANDICAP SYMBOLS, WALKWAYS, AND PARKING STALLS (TYPICAL).
6. INSTALL CONCRETE SIDEWALK (CITY OF PHOENIX STANDARD DETAIL P1230). SEE ARCHITECTURAL PLANS FOR SCORING AND FINISH.
7. INSTALL PRECAST SAFETY CURB (MAG STANDARD DETAIL NO. 150, TYPE B-3).
8. MATCH EXISTING CONCRETE SIDEWALK AND/OR CURB ELEVATION AND LOCATION.
9. REMOVE EXISTING TRENCH DRAIN, GRATE, CANOPY, CANOPY CONSTRUCTION (SEE ARCHITECTURAL PLANS).
10. REMOVE EXISTING TREE.
11. CLEAN AND FILL CRACKS IN EXISTING A.C. PAVEMENT. CLEAN PAVEMENT AND SEAL COAT EXISTING A.C. PAVEMENT.
12. RE-STRIP PARKING LOT AND DRIVES TO MATCH EXISTING STRIPING. STRIPING SHALL INCLUDE ALL HANDICAP SYMBOLS, DIRECTIONAL ARROWS, CROSSWALKS, SPEED BUMPS, ETC.
13. EXISTING DRAINWELL OR GREASE INTERCEPTOR TO REMAIN. PROTECT FROM DAMAGE.
14. INSTALL 3" WIDE OPENING IN EXISTING CURB.
15. CONSTRUCT 3" WIDE CURB OPENING (SEE DETAIL ON THIS SHEET).
16. ADJUST EXISTING DRAINWELL OR GREASE INTERCEPTOR RIM TO PROPOSED ELEVATION (MAG STANDARD DETAIL NO. 422).
17. INSTALL 3" THICK 1/4" JAWS DECOMPOSED GRANITE (COLOR PER ARCHITECT/TOWNER).
18. INSTALL DRAIN THROUGH LANDSCAPED AREA (SEE DETAIL ON THIS SHEET).
19. EXISTING SETBACK LINE TO REMAIN. POSTHOLE AND FIELD PRIOR TO THE START OF CONSTRUCTION. NO SETBACK LINE REDUCTION.
20. CONSTRUCT CONCRETE VALLEY GUTTER (MAG STANDARD DETAIL NO. 240, MODIFIED TO BE 3" WIDE).
21. CONSTRUCT CURB TERMINATION (MAG STANDARD DETAIL NO. 222).
22. ALTERNATE NO. 1 - INSTALL 3" A.C. (TYPE 3/4 INCH) OVER 7/8" A.B.C. OVER COMPACTED SUBGRADE (MAG 7/8" 2.2 CLASS A) DIRECTLY ON SUBGRADE.

STORM DRAIN CONSTRUCTION NOTES

1. INSTALL 8" H.O.P.E. STORM DRAIN PIPE WITH SMOOTH INTERIORS AND 10.8 P.S.I. JOINTS.
2. INSTALL STORM DRAIN CLEANOUT (SEE DETAIL ON THIS SHEET).
3. INSTALL AREA DRAIN (SEE DETAIL ON THIS SHEET).
4. CUT OFF ANGLED PIECE IN EXISTING DOWNGUT AND EXTEND TO EXISTING DRAIN. INSTALL NEW STORM DRAIN PIPE TO ROUND ADAPTER ON THE EXISTING DOWNGUT.
5. CONNECT NEW STORM DRAIN PIPE TO EXISTING GREASE INTERCEPTOR, CORE DRILL AND GROUT AROUND PIPE TO PROVIDE WATER-TIGHT CONNECTION.
6. INSTALL 8" H.O.P.E. STORM DRAIN PIPE WITH SMOOTH INTERIORS AND 10.8 P.S.I. JOINTS.
7. INSTALL 3" H.O.P.E. STORM DRAIN PIPE WITH SMOOTH INTERIORS AND 10.8 P.S.I. JOINTS.

HESS - ROUNTREE, INC.
CONSULTING ENGINEERS & LAND SURVEYORS
PHOENIX, ARIZONA 85006
H-R #1901-01

2 OF 2 C11	Project Number 1569-111 Date 3.4.2019 Drawn By VR Checked By DRO	Revisions	PHOENIX ELEMENTARY SCHOOL, DISTRICT NO. 1 804 N. 18TH STREET PHOENIX, ARIZONA 85006 EDISON ELEMENTARY ENTRY FACE LIFT AND LOBBY	GRADING AND DRAINAGE PLAN 100% CD SET		adm 2100 West 15th Street Suite 100 Phoenix, AZ 85018 Tel: 480.285.3600 Fax: 480.285.3801
-----------------------------	---	-----------	--	---	--	---